

# Product Brief: Intelligent Policing (IP) ANPR

Founded in 1979, IPL has a long history of successfully delivering excellent value consultancy and end-to-end solutions to both the public and private sectors.

IPL's consultancy is renowned for its quality and value. Our consultants are talented and independent-minded individuals with extensive industry experience. We consistently exceed our clients' expectations through a combination of imaginative thinking, managerial and technical expertise and many years of systems engineering experience.

IPL's track record in end-to-end solutions development is exceptional. Our proven development methodology allows us to cut through technical complexity, manage risk and completely focus on delivery. We consistently deliver reliable, efficient and accurate systems to a precise schedule.

IPL is an ISO9001:2000/TickIT registered company having a permanent workforce of 245, revenues of ca. £22M p.a. and 40,000 sq ft of secure office space in central Bath.



## Combining ANPR and Operational Intelligence

### Overview

First generation ANPR systems have been extremely successful in detecting simple crimes: tracking known VRMs, finding stolen vehicles and prosecuting uninsured or un-taxed road users. While these achievements are significant, it is only when ANPR data is enriched with information from other sources, particularly operational intelligence, that its full power becomes apparent.

Developed in conjunction with Kent Police, **IP ANPR**, is unique in combining intelligence and ANPR data into a powerful toolset able to detect and investigate serious and complex crime. Through detailed analysis of vehicle movements, **IP ANPR** reveals patterns of behaviour which, when linked to other intelligence data, provides forces with a truly powerful investigative tool. Importantly, it builds on existing investment in ANPR and intelligence data and does not add to the data administrator's burden.

Intelligence and other information assets, regardless of source, fall into one of six key categories: events, locations, objects, people, communications, and organisations. **IP ANPR** finds the connections between these entities and unlocks the hidden value that lies within.

### IP's solution

From an uncomplicated, intuitive web browser interface, non-analyst users can search and navigate these associations. With **IP ANPR** users can, from one system, move from detailed analysis of vehicle movements to freely navigate associations with operational information on people, events, locations, objects, etc. and then back again to look at vehicle movements.

The ANPR information is displayed spatially, chronologically, and statistically (using street maps, timelines, charts, and tables) and allows anomalous behaviour to be highlighted. But the real power of **IP ANPR** is being able to see this information in the context of other intelligence such as crime scenes, crime series, pre-crime activity, MO signatures, suspect groups, etc. Having all this information visible from one system allows lifestyle and offending hypotheses to be formed and tested, leading to greatly improved clear-up rates.



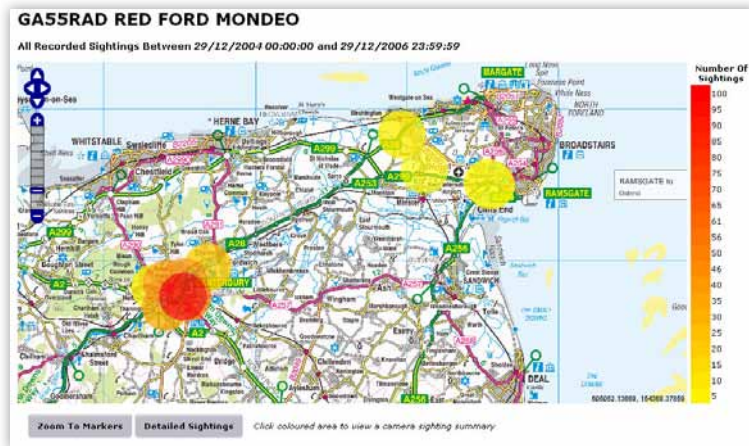
## Operational scenario

Here's an example scenario showing what can be achieved using **IP ANPR**:

An officer is investigating a series of 4 armed jewellery shop raids over the last 3 months. The MO appears to be the same: in all cases, the get-away vehicle is later found abandoned a short distance away and the robbers are presumed to have transferred into another vehicle.

From **IP ANPR** the user performs a crime series search in the vicinity of the abandoned cars for a short time window just after each robbery. Results show one vehicle (VRM1) that was in the area of three of the four crimes. The system shows this to be linked to a Nominal (N1) who is also associated with another Nominal (N2) and that N2 has a previous conviction for armed robbery. The system shows N2 to be linked to a van (VRM2). Further searching in **IP ANPR** reveals that VRM2 displays some anomalous behaviour in the 48 hours after each robbery. Specifically it can be shown that, in each case, it took the same journey to an estate 10 km away. **IP ANPR** shows that there is Nominal (N3) living here with convictions for handling stolen goods.

**IP ANPR** is thus able to help quickly target resources to achieve the best effect, saving months of conventional investigation.



## Why IPL's solution is different

The bottom line is that **IP ANPR** makes your information assets work harder. It helps you get answers to difficult questions spanning multiple information sources in real time. And it can be used by operational users, not just intelligence analysts.

The acid test is this: can your existing ANPR system help you answer these sorts of question?

- How many CAT Bs go out and back on a particular stretch of road on a Wednesday between 16:00hrs and 18:00hrs?
- How many sex offenders go into a given town centre on a Saturday night between 21:00hrs and 00:00hrs?
- How many paedophiles are seen in the vicinity of primary schools within a given area?
- How many CAT As are seen in the vicinity of ATM robberies within a given area?

Assuming the information exists already in your database, **IP ANPR** can give you the answers in seconds!

**Vehicles**

| Link   | Record Type | Details                         | Link Date  |
|--------|-------------|---------------------------------|------------|
| DRIVER | Vehicle     | N273950 GREEN WALKHAIL CAVALIER | 19/04/1996 |
| DRIVER | Vehicle     | GA55RAD RED FORD MONDEO         | 25/05/2007 |

View Vehicle

Link: N273950  
Category: CABIN AND VAN  
Name / Model: WALKHAIL CAVALIER  
Type: SALOON  
Colour(s): GREEN  
Disturbing details: HAS BLACKED OUT WINDOWS

Showing 1 - 2 of 2

**Locations**

| Link        | Record Type | Details   | Link Date  |
|-------------|-------------|---|------------|
| STOPCHECKED | Location    | WELLINGTON STREET<br>HADESTONE<br>KENT          | 23/08/1996 |
| HOME        | Location    | 3 NORTON ROAD<br>HADESTONE<br>KENT ME13 7JD     | 19/04/1996 |
| HOME        | Location    | 68 HERRIDGE DRIVE<br>HADESTONE<br>KENT ME13 7ES | 12/07/2001 |
| STOPCHECKED | Location    | HIGH STREET<br>HADESTONE<br>KENT                | 04/10/2000 |

View Location

Occupying Business:  
Flat Number / Name:  
Building Name:  
Estate Name: WELLINGTON STREET  
Estate:  
District:  
Beat Code: L2832  
Town: HADESTONE  
County: KENT  
Post Code:  
Grid Ref: 577659 134899  
URN: 2006054

## Benefits

- Easy to use by non-technical, non-analyst personnel
- Quick query responses
- Utilises any accessible intelligence and ANPR data assets
- Correlation of vehicle movements with crimes, people, locations, events
- Analysis of behavioural patterns, normal vs anomalous
- Corroborating statements and alibis
- Identifying probable witnesses
- Allows efficient targeting of resources
- Built upon modern, powerful, industry standard technologies



## Contact Information

IPL Information Processing Limited  
Eveleigh House  
Grove Street  
Bath  
BA1 5LR

Tel: +44 (0) 1225 475000  
Email: [emergencyservices@ipl.com](mailto:emergencyservices@ipl.com)

IPL - Emergency Services  
(Intelligent Policing ANPR Brief 2.2)  
Copyright © IPL

IPL® and IPL intelligent business® are registered trademarks of IPL Information Processing Limited; all rights reserved. All other trademarks are acknowledged.