

Technical brief: geospatial information and mapping

About IPL

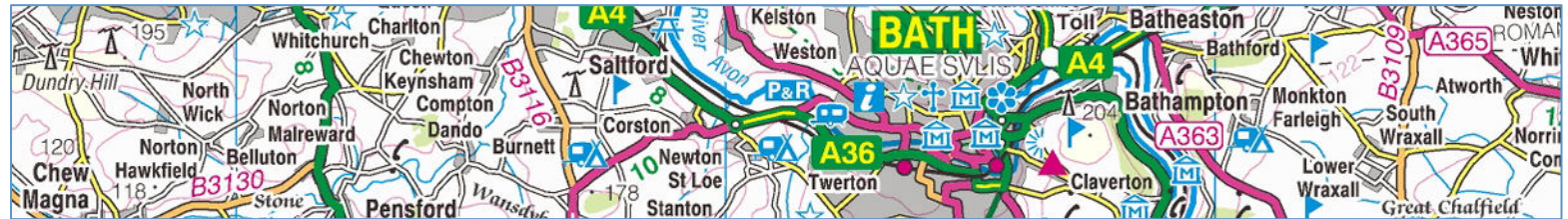
Founded in 1979, IPL has a long history of successfully delivering excellent value consultancy and end-to-end solutions to both the public and private sectors.

IPL's consultancy is renowned for its quality and value. Our consultants are talented and independent-minded individuals with extensive industry experience. We consistently exceed our clients' expectations through a combination of imaginative thinking, managerial and technical expertise and many years of systems engineering experience.

IPL's track record in end-to-end solutions development is exceptional. Our proven development methodology allows us to cut through technical complexity, manage risk and completely focus on delivery. We consistently deliver reliable, efficient and accurate systems to a precise schedule.

IPL is an approved Buying Solutions supplier having been awarded two key supply frameworks.

IPL is an ISO9001:2000/TickIT registered company having a permanent workforce of 245, revenues of ca. £22M p.a. and 40,000 sq ft of secure office space in central Bath.



What, where and when?

GIS and visualisation

Increasingly there is a widespread expectation that geospatial information be integrated with accurate maps, and other imagery, in a readily useable and interactive manner.

IPL has the domain knowledge and technological experience to bring GIS data and visualisation together successfully.

IPL has significant experience of numerous high-end Geographical Information System (GIS) and mapping technologies, including MapInfo's MapXtreme and MapLink from Tenet Technology, as well as AJAX-based toolkits, such as Google Maps & Microsoft Virtual Earth.

We have successfully integrated a set of open source tools to provide a thin-client, web-based map display solution, IP Map. A browser client and open-source server software stack displays "slippy" mapping from various sources (including Google Maps to and Ordnance Survey) along with overlaid geospatial data. It provides a very economical and competitive alternative to formal GIS systems.

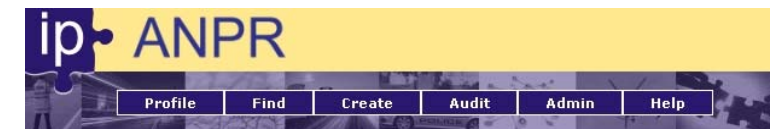
IPL has also developed a number of systems for clients in the public and private sectors. These systems aim to significantly improve the efficiency and effectiveness of their users by presenting the relevant information in a clear and comprehensible manner.

Intelligent policing

IPL's Intelligent Policing Automatic Number Plate Recognition (ANPR) product is unique in that it enables a wide range of police staff to view combined ANPR and other intelligence data together.

The ANPR information is displayed spatially, chronologically and statistically, using Ordnance Survey maps with timelines, charts and tables. Anomalous behaviour can be highlighted in the context of other intelligence (e.g. crime scenes, crime series). Having all this information visible from one system allows lifestyle and offending hypotheses to be formed and tested, leading to greatly improved crime clear-up rates.

IP ANPR is based on IPL's IP Map technology, serving Ordnance Survey raster images and vector mapping data.



IPL client developments

INSPIRE

IPL is actively assisting clients, such as the Highways Agency, in their efforts to meet the challenging requirements of the INSPIRE directive. Its aim is to create a European infrastructure for the effective publishing and interoperability of all spatial information held by all public authorities of the EU Member States.

Merlin DPF

IPL produced a Data Preparation Facility (DPF), for the Royal Navy's fleet of Merlin maritime helicopters, with the aim of reducing mission planning time as the primary goal.

An intuitive user interface allows for fast entry of mission data, via screens to imitate the on-board systems. The software interface incorporates Tenet MapLink Pro rapidly combine vector and raster maps.

DATEX II

For over 5 years IPL has represented the Highways Agency on the DATEX Technical Committee and has developed a DATEX II Visualization Tool.

This, the first application to offer access to live traffic information from across Europe by seamless scrolling across international borders, acquires data from each of the national Traffic Control.

NOMAD

The Highways Agency are responsible for the through-life management of its roadside assets (signals, CCTVs, etc). The National Online Motorway Asset Database (NOMAD) holds information on all these assets, their maintenance history, and management information.

IPL is responsible for NOMAD and its on-going development to create flexible reporting and analysis facilities. The system uses MapXtreme from MapInfo to present vector maps supplied by the Ordnance Survey.

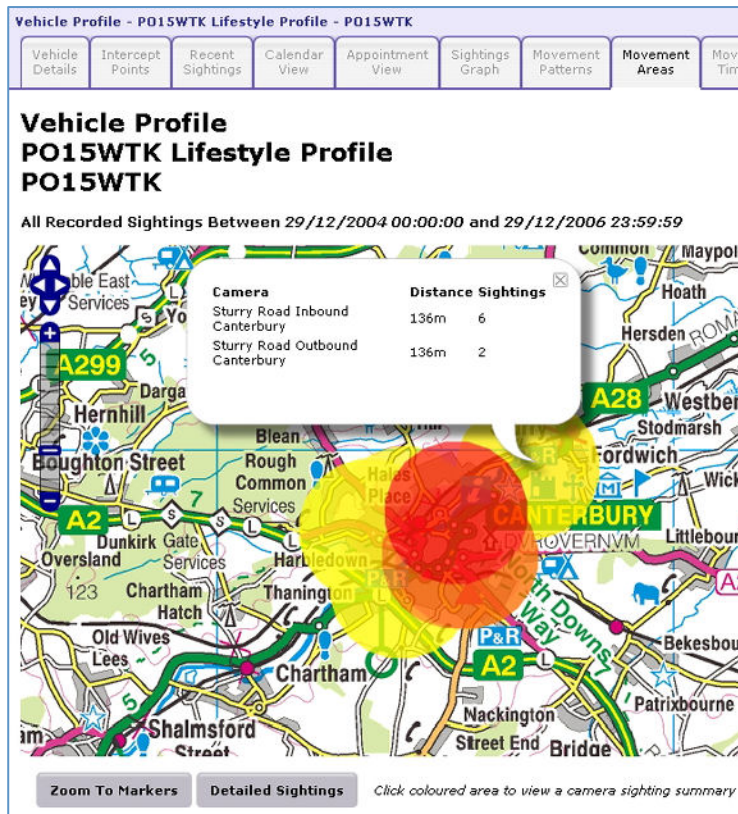
IPL capabilities

Organisations embarking on, or running, geospatial projects often need managerial and technical advice to ensure that those projects are a success. IPL is an Ordnance Survey Developer Partner and has a wealth of practical experience in mapping technologies and services, together with an enviable track record in solutions development. Our consultants, managers and developers can help at each stage of the project lifecycle.

Our solution development projects range in commercial value from £1,000 to over £15 million: from a single day of consultancy to a tightly managed team of over 50 developers. Whatever the size of the project, IPL can offer the right person or team to meet your requirements.

IPL's expertise is illustrated by the variety of activities our clients ask us to address:

- System scoping
- Requirements definition
- System procurement
- Project management
- Software development
- System deployment



Certificate Number FM 01589

Contact information

Services Sales
 IPL Information Processing Limited
 Eveleigh House
 Grove Street
 Bath
 BA1 5LR

Tel: +44 (0) 1225 475000
 Fax: +44 (0) 1225 444400
 Email: sales@ipl.com

IPL BRF NS 5.1
 Copyright © IPL 2008
 Ordnance Survey © Crown copyright 2008
 All trademarks acknowledged